

How to Update the Firmware with Network connection

Please read and follow this procedure before updating the firmware of your printer.

To update the firmware of your printer you need

➤ This procedure

➤ A tool called **Epson Firmware Updater (2.0a)**

You can find it in the related documents on the web page

This software can be used with the following OS:

<Windows>

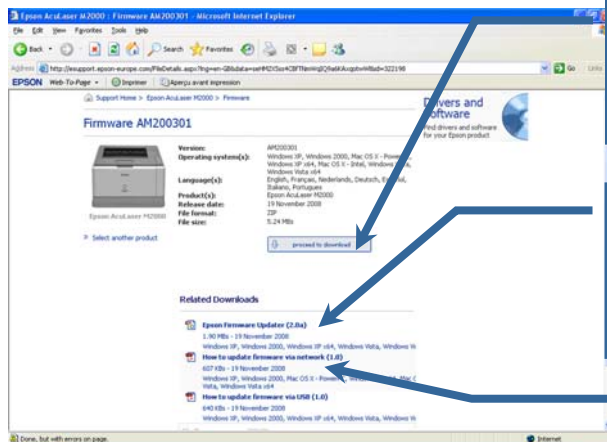
Windows 2000 (Professional/Server), Windows XP (Home Edition/Professional Edition),
Windows Server 2003 Standard Edition, Windows Server 2003 Enterprise Edition
Windows XP Professional x64 Edition, Windows Server 2003 x64 Edition
Windows Vista, Windows Vista x64 Editions

<Macintosh>

Mac OS X 10.2.x or later (Intel Mac support 10.4 or later)

➤ The firmware file called **Firmware (AM200320)**

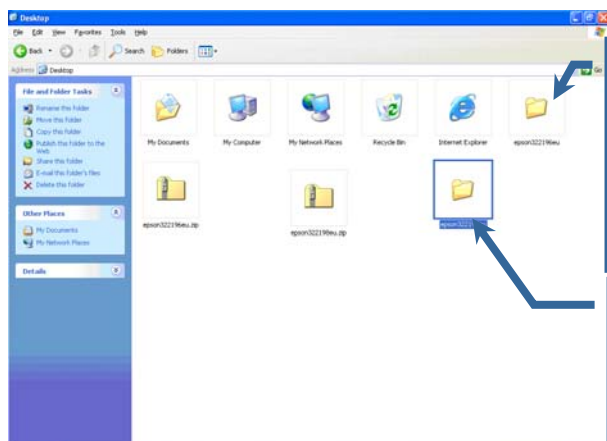
You can find it in the related documents on the web page



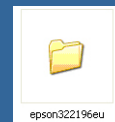
1 Please download, save and unzip the Firmware file.

2 Please download, save and unzip the Epson Firmware Updater.

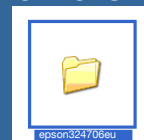
Here is this procedure



Epson Firmware Updater is in the folder .

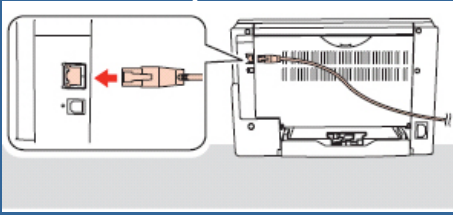


The firmware file is in the folder

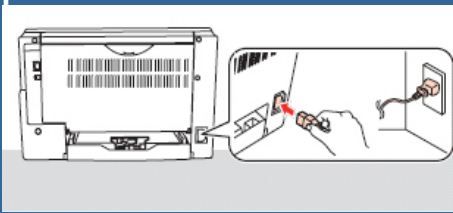


How to Update the Firmware with Network connection

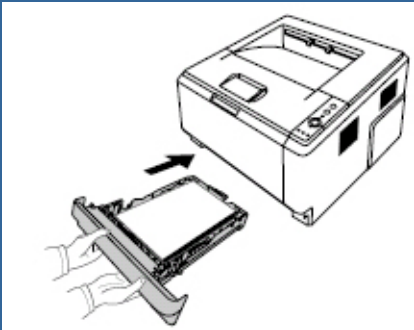
- 1** Connect the network cable to the printer



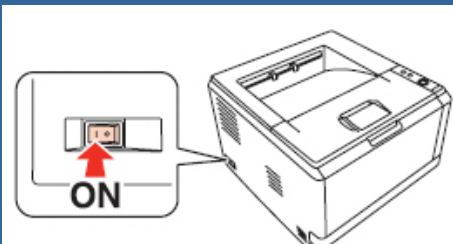
- 2** Connect the printer to the wall outlet with the power cable .



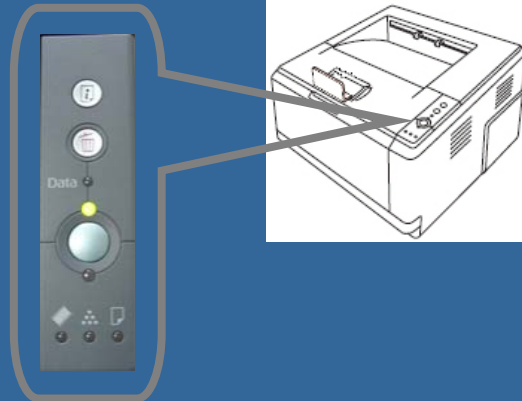
- 3** Set several paper sheets in the standard cassette.



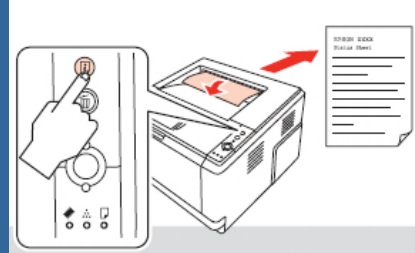
- 4** Turn On the printer



- 5** Check that the printer is in Ready Status.



- 6** Print the Status Sheet by pressing once the info button



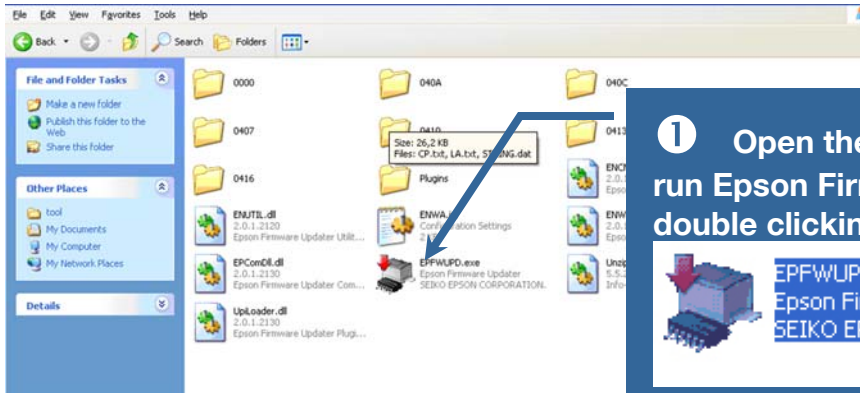
- 7** Read the current firmware version of your printer in the Hardware Configuration section.



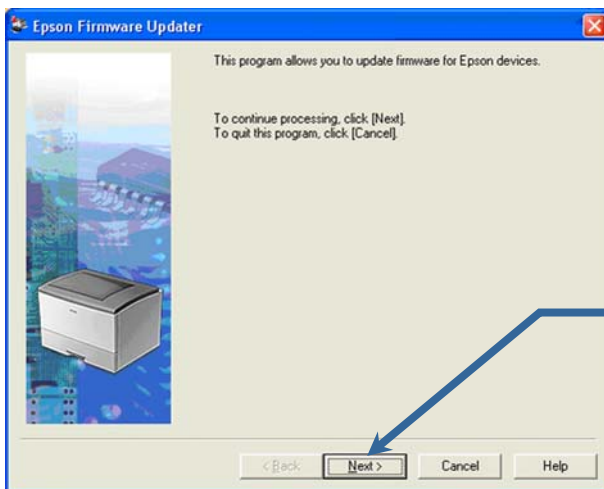
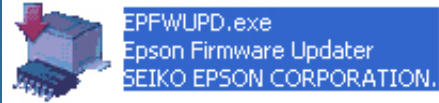
Example here it's 26815

Firmware Revision 26815 26903 271

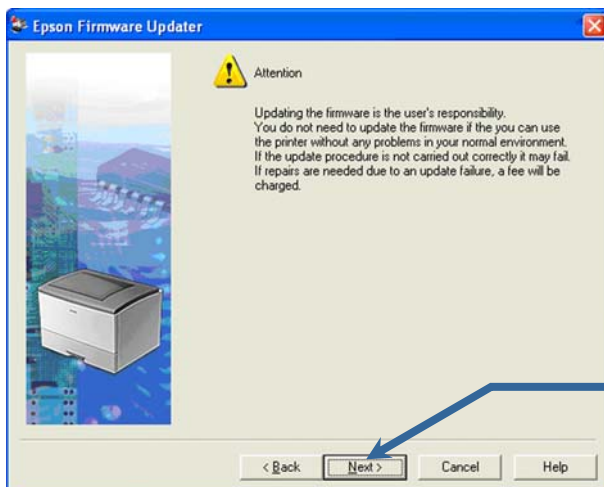
How to Update the Firmware with Network connection



1 Open the tool folder and run Epson Firmware Updater by double clicking this icon



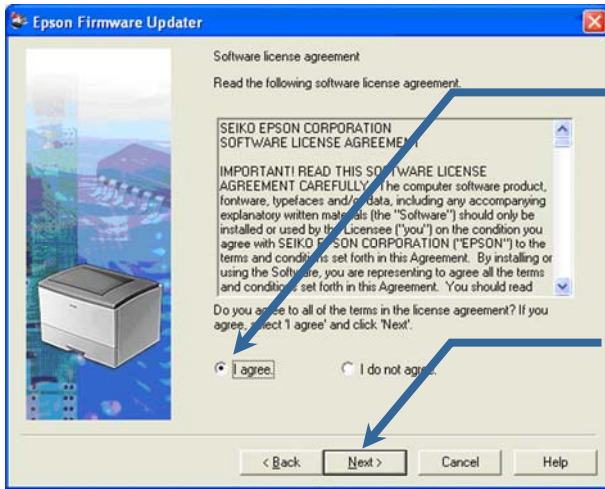
Click the Next button



Neither EPSON nor its affiliates will assume any responsibility for any damages that result from a Firmware update. Your use of this page and the related tasks (Firmware download, then Firmware installation) is at your own risk.

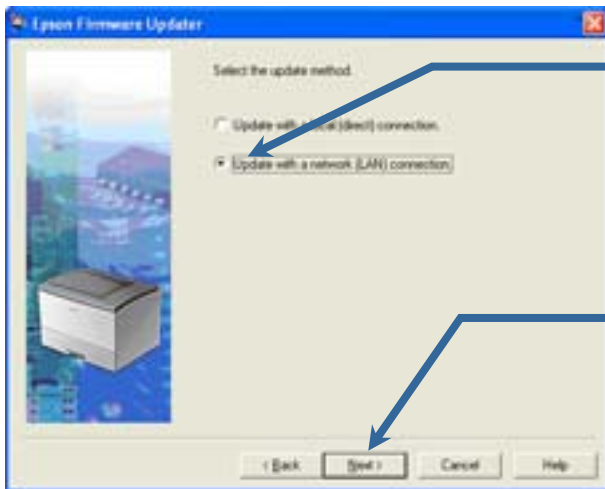
Click the Next button

How to Update the Firmware with Network connection



1 After reading the license please agree it by ticking here

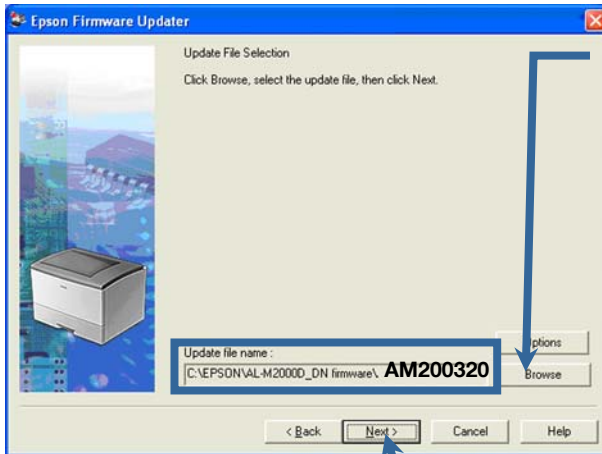
2 Then click the Next button



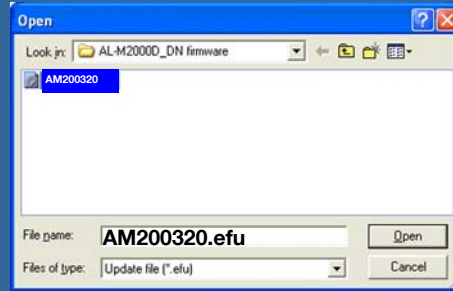
1 You are updating the firmware with Network, Please tick here

2 Then click the Next button

How to Update the Firmware with Network connection

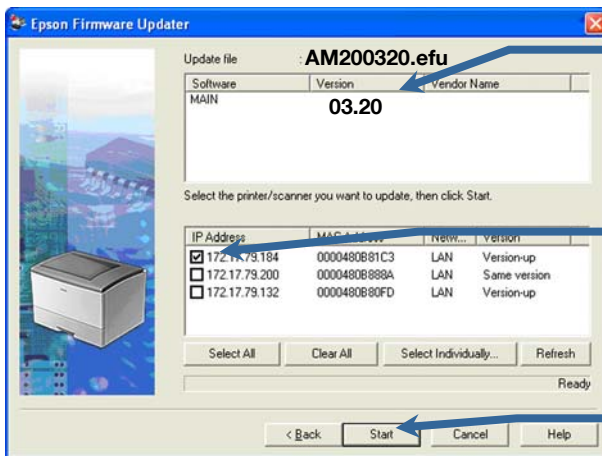


1 Please find the firmware file.
It is located where you save it.
It is called AM200320.efu



2 Select it

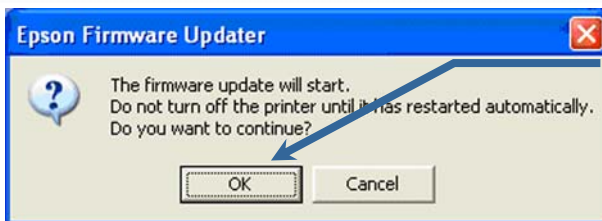
3 Then click the Next button



It displays the update firmware version

1 Select the printer to be updated.

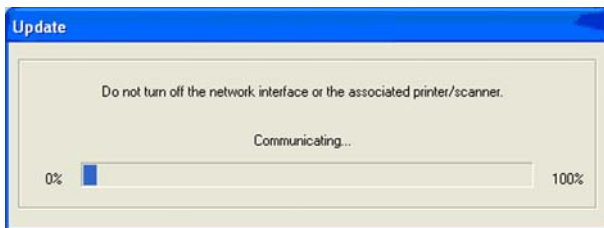
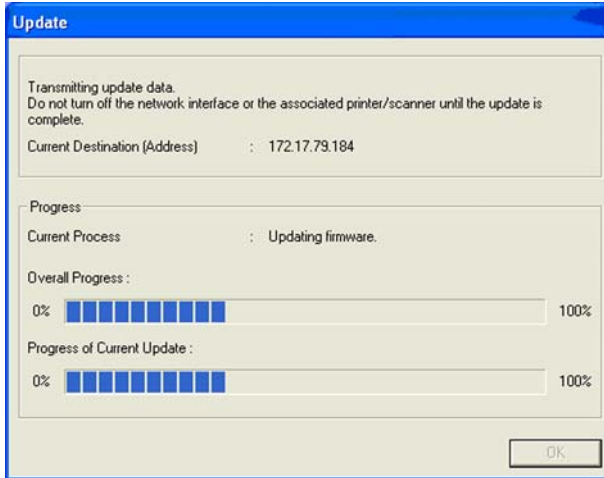
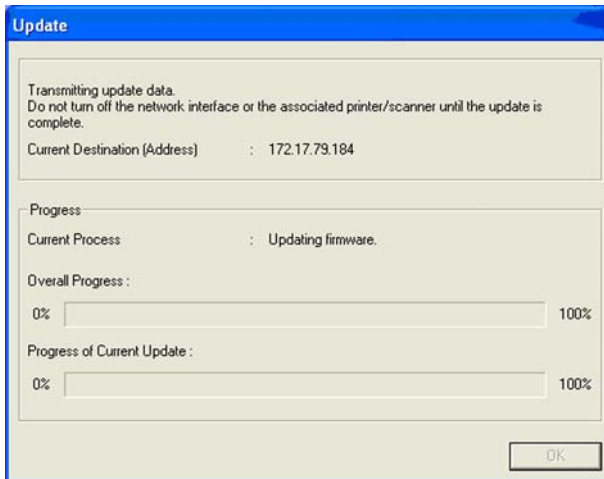
2 Then click the Start button



Then click the OK button

How to Update the Firmware with Network connection

The following 3 windows will be successively displayed:



The updating starts

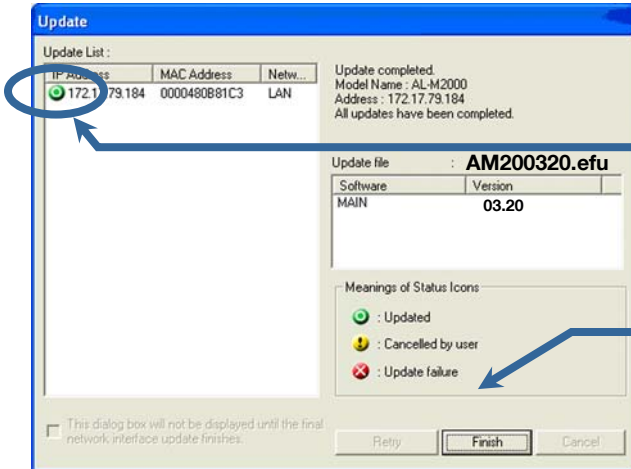
Please wait 15 minutes



15 min

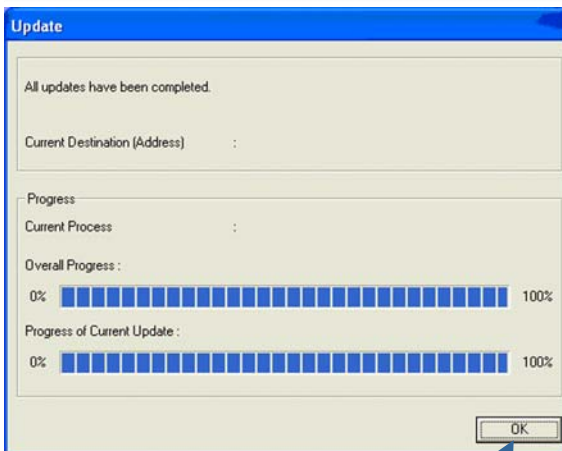
**DO NOT TURN OFF
THE PRINTER
DURING THE
UPDATING.**

How to Update the Firmware with Network connection



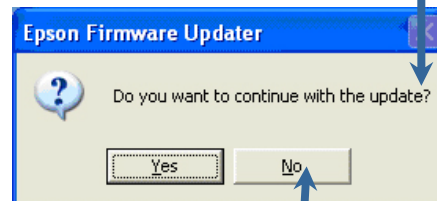
1 Check that the color of the icon is green

2 Click the Finish Button



It means:

Do you want to use again the Firmware Updater tool?



1 Click the OK Button

2 Click the No Button

Print a Status Sheet by pressing once the Info button of the printer. Then check that the firmware version in the Hardware Configuration Section is 26830



Congratulations

The Updating has been successfully completed and your printer is Ready to use