

How to Update the Firmware with USB connection

Please read and follow this procedure before updating the firmware of your printer.

To update the firmware of your printer you need

➤ This procedure

➤ A tool called **Epson Firmware Updater (2.0a)**

You can find it in the related documents on the web page

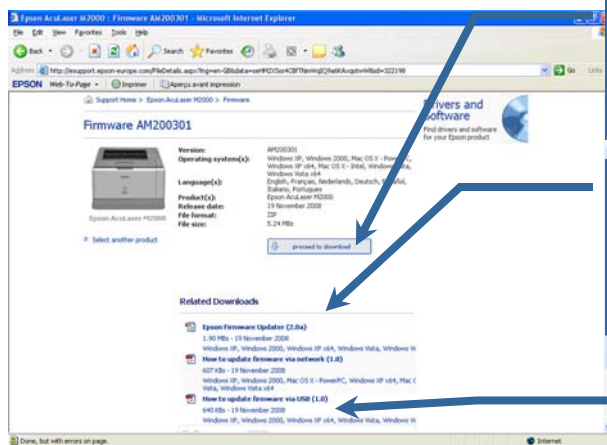
This software can be used with the following OS:

<Windows>

Windows 2000 (Professional/Server), Windows XP (Home Edition/Professional Edition),
Windows Server 2003 Standard Edition, Windows Server 2003 Enterprise Edition
Windows XP Professional x64 Edition, Windows Server 2003 x64 Edition
Windows Vista, Windows Vista x64 Editions

➤ The firmware file called **Firmware (AM200320)**

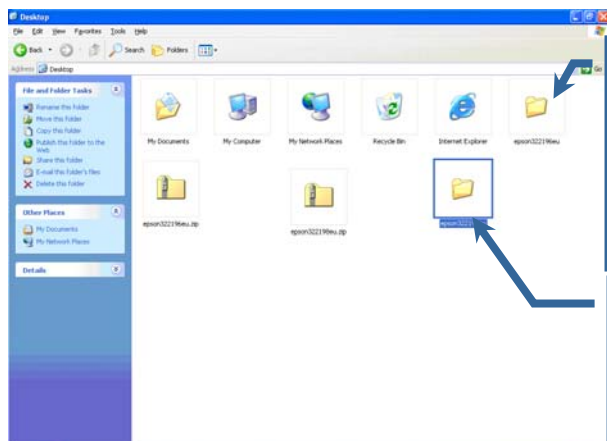
You can find it in the related documents on the web page



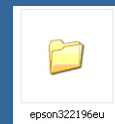
1 Please download, save and unzip the Firmware file.

2 Please download, save and unzip the Epson Firmware Updater.

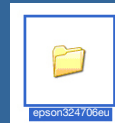
Here is this procedure



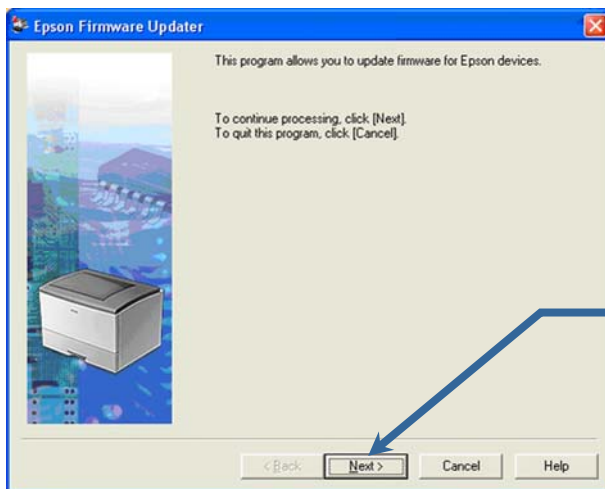
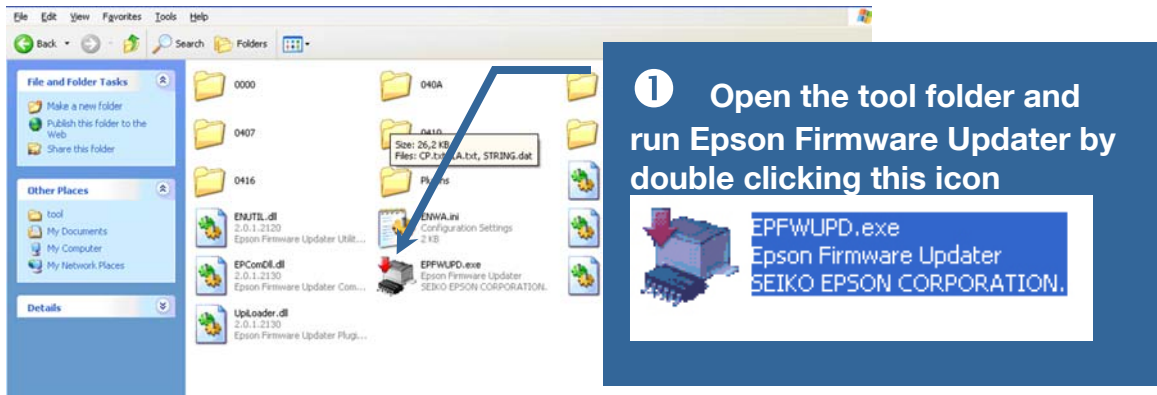
Epson Firmware Updater is in the folder .



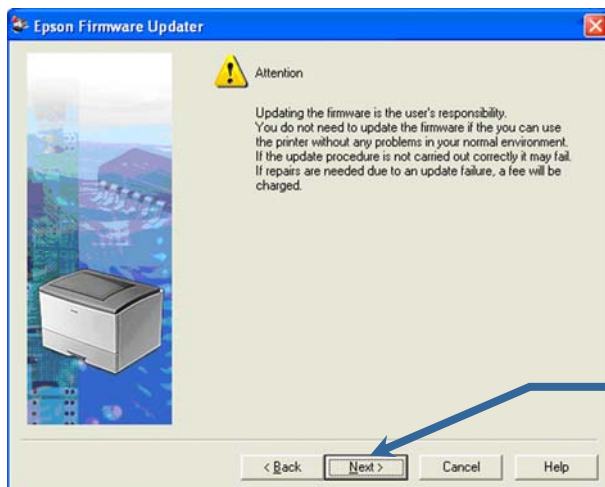
The firmware file is in the folder



How to Update the Firmware with USB connection



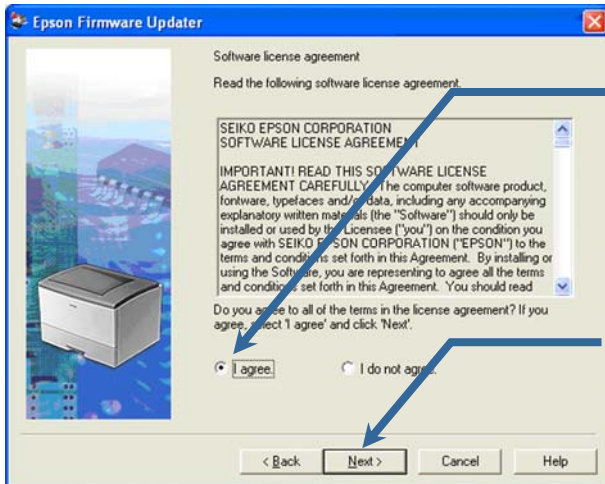
Click the Next button



Neither EPSON nor its affiliates will assume any responsibility for any damages that result from a Firmware update. Your use of this page and the related tasks (Firmware download, then Firmware installation) is at your own risk.

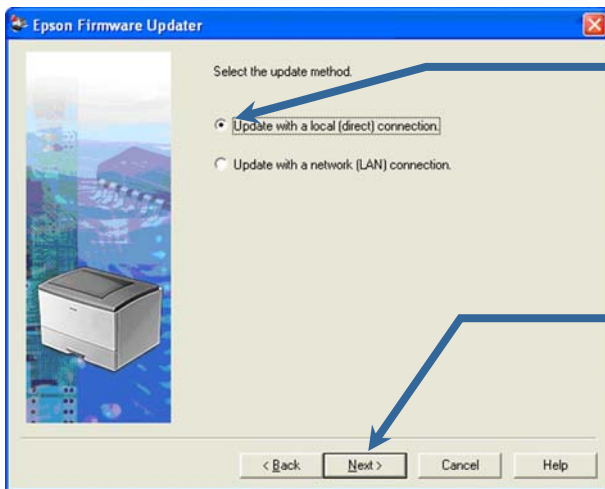
Click the Next button

How to Update the Firmware with USB connection



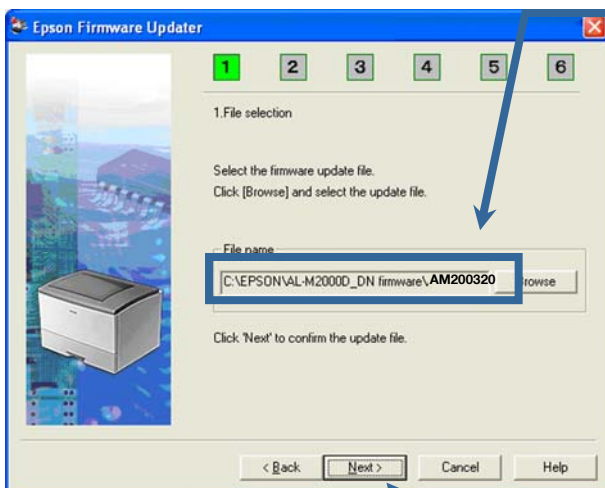
1 After reading the license please agree it by ticking here

2 Then click the Next button

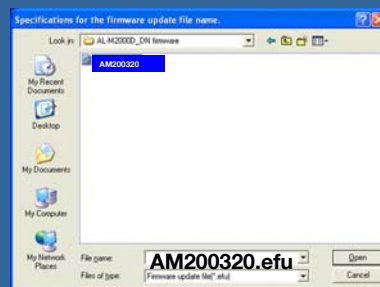


1 You are updating the firmware with USB, Please tick here

2 Then click the Next button



1 Please find the firmware file. It is located where you save it. It is called AM200320.efu



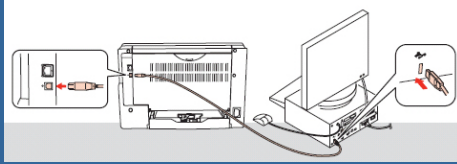
2 Select it

3 Then click the Next button

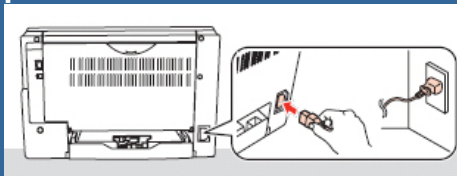
AM200320

How to Update the Firmware with USB connection

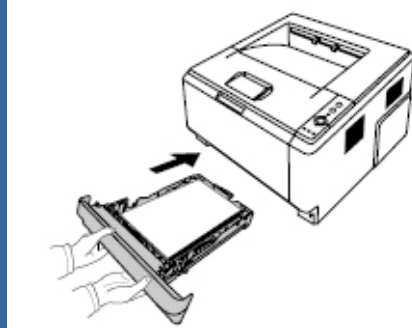
- 1 Connect the printer to the PC with the USB cable .



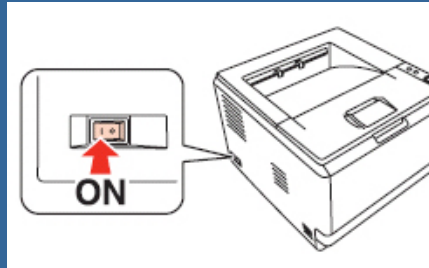
- 2 Connect the printer to the wall outlet with the power cable .



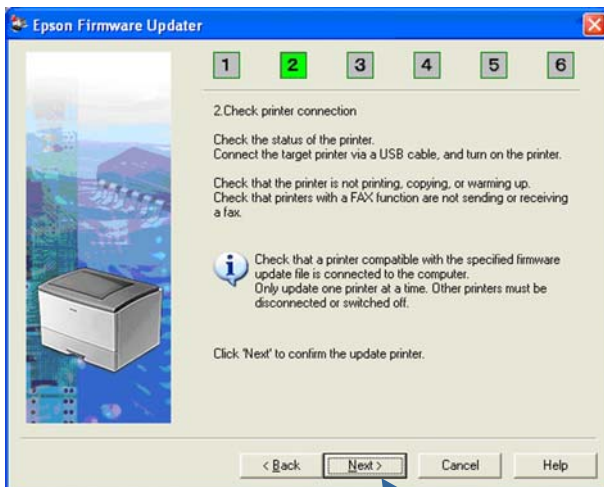
- 3 Set several paper sheets in the standard cassette.



- 4 Turn On the printer

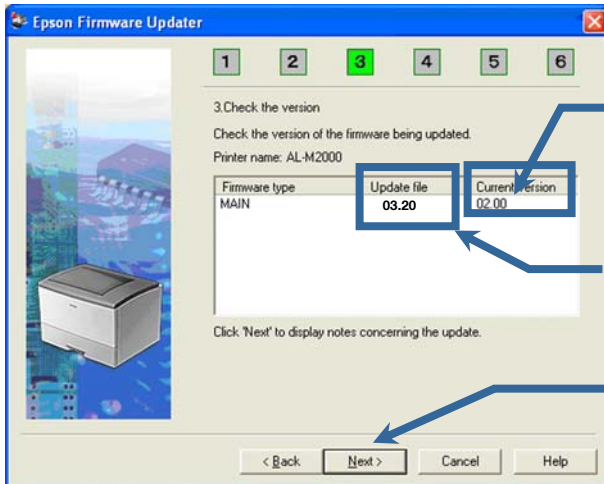


- 5 Check that the printer is in Ready Status.



- 6 Then click the Next button

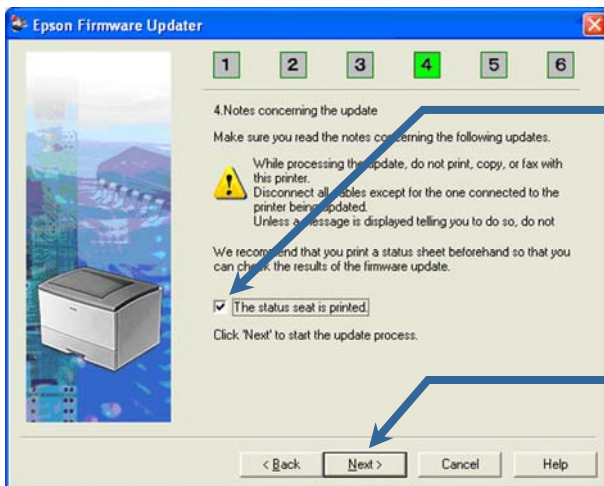
How to Update the Firmware with USB connection



It reads the current firmware version of your printer

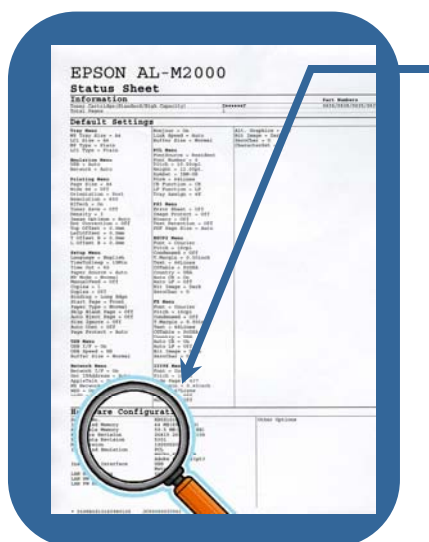
It reads the update firmware version

Click the Next button



1 Please tick here to print a Status Sheet

2 Then click the Next button

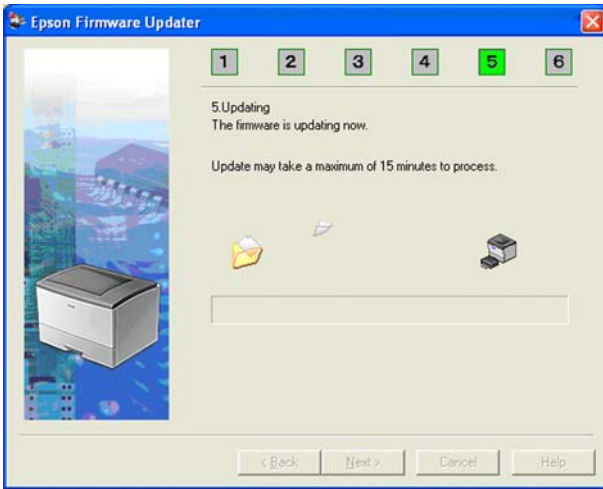


In the hardware configuration section, you can read the current firmware version of your printer

Example here it's 26815

Firmware Revision	26815	26903	27104
-------------------	-------	-------	-------

How to Update the Firmware with USB connection



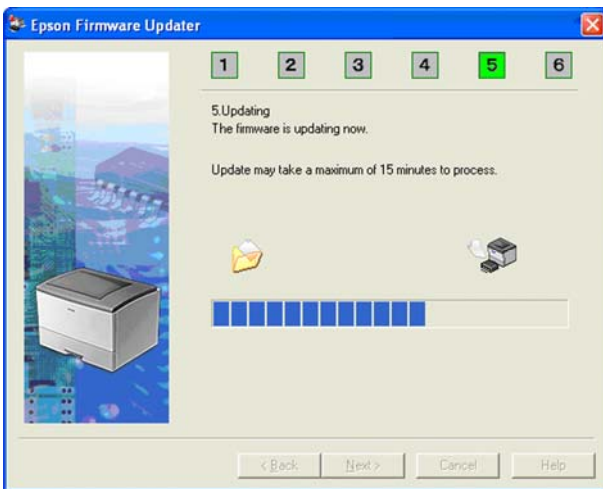
The updating starts

Please wait 15 minutes

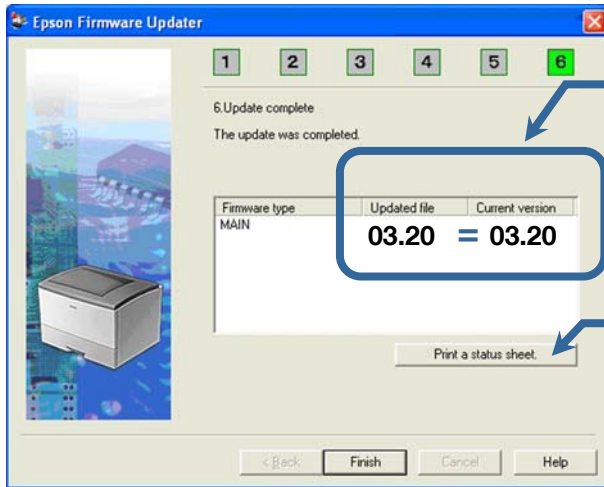


15 min

DO NOT TURN OFF THE PRINTER DURING THE UPDATE.



How to Update the Firmware with USB connection



At the end the Update file version and current file version should be the same

1 Click here to print a Status Sheet

2 Check the firmware version in the Hardware Configuration Section



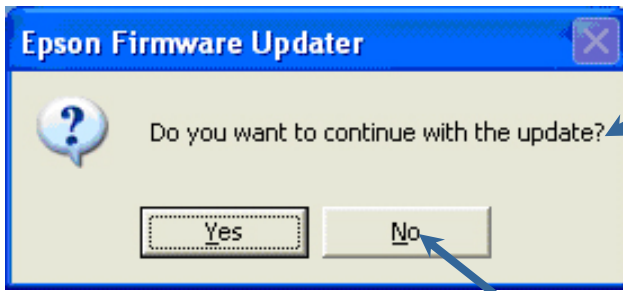
it is 26830 now

3 Then click the Finish button

How to Update the Firmware with USB connection

Congratulations

The Updating has been successfully completed and your printer is Ready to use



It means:

Do you want to use again the Firmware Updater tool?

Click the No Button